



Approval ECE-R129

# Oyster

*Capsule Infant*

Child car seat

ⓘ For your child's safety  
please read carefully  
before use

## Instructions

Height: 40-83cm Weight 0-13kg



BabyStyle UK Ltd, 36 Charles Street,  
Sileby, Leicestershire, LE12 7RJ  
United Kingdom



[www.babystyle.co.uk](http://www.babystyle.co.uk)



+44 1509 816444



TESTED & APPROVED  
**ECE-R129**  
European Commission for Europe

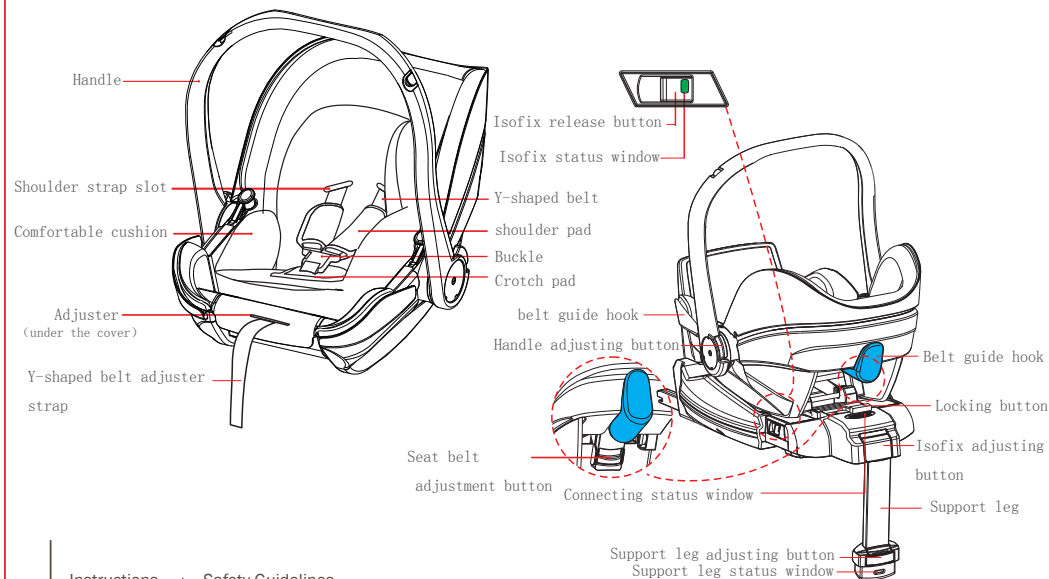
## USER GUIDE

- This is an “i-Size” Enhanced Child Restraint System (car seat). It is approved to Regulation No.129, for use in, “i-Size compatible” vehicle seating positions as indicated by vehicle manufacturers in the vehicle users’ manual.
- If in doubt, consult either the Enhanced Child Restraint System manufacturer or the retailer.

---

Oyster Capsule Infant Isofix Isize Car Seat

## 1 PRODUCT OVERVIEW



## 2 FEATURES

- This is an i-Size child car seat, commonly known as a baby carrier/baby car seat/ Infant carrier. This infant carrier can be used together with a stroller (check compatibility before use) to create a travel system. A child should not spend more than 2 hours in the car seat/ infant carrier at one time, that includes time in the car and when the seat is used as a travel system (as a stroller). The safest way for babies to sleep is on their backs - as recommended by experts at the Lullaby Trust.
- This child seat can only be used with the integral Y-shaped belt (harness) for children. It is suitable for children up to a height of 83cm and a maximum weight to 13 kg. Never overload the child seat more than one child or with other loads.

## 3 SAFETY WARNINGS

- For your child's safety, please read these instructions carefully before use and keep them for future reference. Failure to follow the instructions contained in this manual could result in serious injury to your child.

- For ISOFIX installation: Make sure you read the car manufacturer's handbook.
- Do not use any load bearing contact points other than those described in the instructions and marked in the child restraint for infant carrier module without ISOFIX base. Any straps holding the restraint to the vehicle should be tight.
- Any straps restraining the child should be adjusted to the child's body, and that straps should not be twisted.
- Any support-leg should be in contact with the vehicle floor.
- Make sure any strap is worn low down, so that the pelvis is firmly engaged, shall be stressed.
- The child seat should be replaced when it has been subject to violent stresses in an accident.
- It is dangerous to make any alterations or additions to the device without the approval of the Type Approval Authority, not following closely the installation instructions provided by the child restraint manufacturer is also dangerous.
- The child seat should be kept away from sunlight if the seat is not provided with a textile cover, otherwise it may be too hot for the child's skin, exposed plastic surfaces can become very hot in the sun.

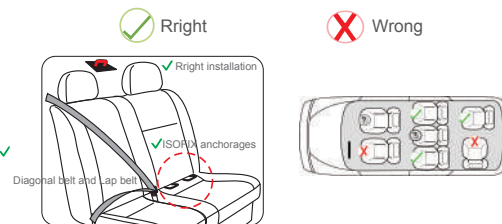
- Do not leave your child unattended in the seat at any time.
- Any luggage or other objects liable to cause injuries in the event of a collision shall be properly secured.
- The Enhanced Child Restraint System shall not be used without the cover.
- The seat cover should not be replaced with any other than the one recommended by the manufacturer, because the cover constitutes an integral part of the restraint performance.
- Ensure that all components of the children's safety seat are secured to the correct position during the daily use of the vehicle, that they are not liable, during the everyday use of the vehicle, to become trapped by a moveable seat or in a door of the vehicle.
- Please keep this instruction manual for the life of the product ✓
- Do not use this child seat at home. It has not been designed for home use and should only be used in your car.
- For the reason of safety, the child seat must be fixed inside the vehicle using ISOFIX anchorages even if you do not put your child inside the child seat.
- Never use a second-hand product, as you can never be certain what was happened to it.
- This is an i-Size Enhanced Child Restraint System. It is approved according to Regulation No.129, for use in, i-Size compatible vehicles.

Instructions ▶ Safety Guidelines

- compatible vehicle seating positions as indicated by vehicle manufacturers in the vehicle users' manual. If in doubt, consult either the Enhanced Child Restraint System manufacturer or the retailer.
- Don't use the child seat in seating positions where there is an active frontal airbag installed.

## 4 USAGE

### 4.1 Installing position of the child seat in vehicle

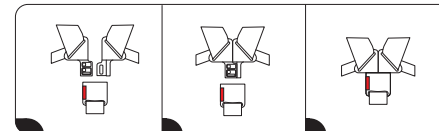


- When used as an infant carrier with ISOFIX base, this type of child safety seat is suitable for fixing into the seat positions of the cars equipped with ISOFIX system that is fitted in accordance with ECE R14.
- When used as an infant carrier module without an ISOFIX base, this type of child safety seat is suitable for a car equipped with 3 point belts approved to ECE R16

- This infant carrier not suitable for a car which is only equipped with 2 point safety belts.

- ⚠️ Do not use rearward-facing in seating positions where an active frontal airbag is installed.
- ⚠️ Only install in this position if three-point safety belts are fitted.

### 4.2 Using the buckle, closing & opening



- Step1: Place the left and the right pieces of buckle (on the shoulder straps) together.
- Step2: Insert the two pieces into the opening of the crotch buckle at the same time. Hearing a "click" means the buckle is locked and connected. Pull the belts connected to buckle and check whether the buckle is locked correctly.
- Step 3: To release the buckle, press in the red button and the buckle will eject and release.

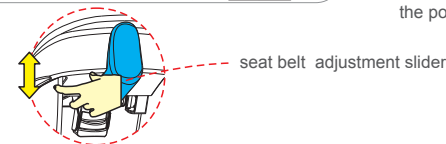
### 4.3 Check the height of harness

- Always check whether the Y-shaped belts are at the correct height for your child. If not, adjust the height of headrest/harness using the adjustment slider at the back of the seat (see the picture below).



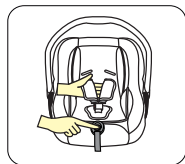
If the height of the harness shoulder straps not correct please adjust according to the following steps:

- Step1: Press the red button of buckle, two pieces of buckle will eject automatically (see 4.2)
- Step2: Move the seat belt adjustment slider to change the position of harness shoulder belts.

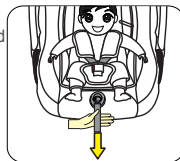


## 4 USAGE

### 4.4 Adjust and use the Y-shaped belts

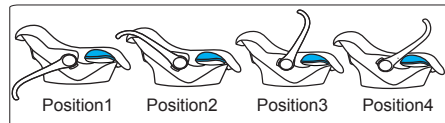


- Loosen the Y-shaped belts  
The Y-shaped belts can be slackened by pressing the adjuster (under the seat cover). Press the adjuster as you grip the two Y-shaped belts with your another hand. Pull the Y-shaped belt towards you to loosen the Y-shaped belts.



- To tighten the Y-shaped harness belts  
Pull the front upwards until the Y-shaped belt is fully tightened. The Y-shaped belt should be adjusted tightly without causing discomfort to the child. A loose Y-shaped harness belt can be dangerous. Check the harness belt adjuster and tighten it each time when the child is placed in the seat.

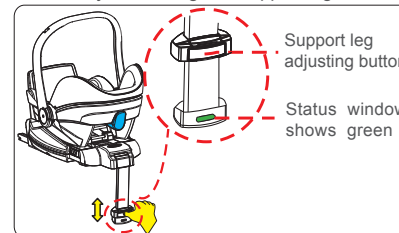
### 4.5 Adjust the handle



- The handle can be adjusted in 4 positions. At the same time, squeeze-in the handle adjusting buttons at both ends of the handle, rotate the handle to the desired position, and release the handle adjusting buttons. Position the handle forwards, backwards or upright, make sure the handle is locked in position by releasing the handle adjusting button, you should hear a 'click'.  
**Notice:** When the vehicle is in use, the handle must be in the position 4.

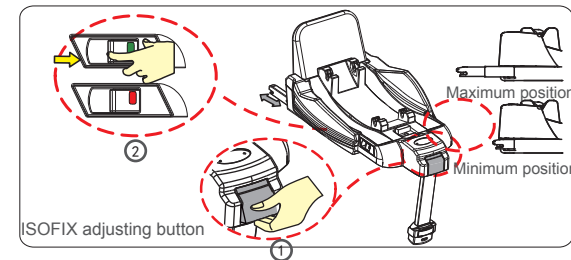
## 4 USAGE

### 4.6 Adjust the length of support leg



- Press the button to adjust the length of support leg and make sure the bottom of the support leg touch the ground completely, to suitable for different height of car seat. When the bottom of the support leg touch the ground completely, the support leg status window shows green.

### 4.7 Adjust the ISOFIX attachment bars



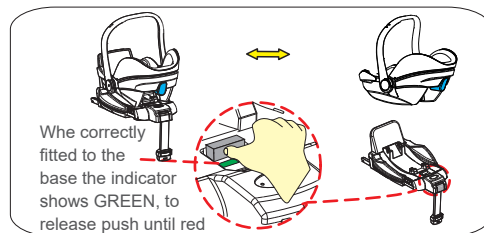
## 4 USAGE

The ISOFIX attachments can be adjusted to other positions to fit the different positions of ISOFIX anchorage points relative to the vehicle seat. As the picture above shows (picture 1) pull up the ISOFIX adjusting lever found at the front of the base and the ISOFIX bars on either side of the base will eject to the longest position. Connect both of the ISOFIX attachments with the corresponding ISOFIX vehicle anchorage points. When you hear the 'clicks' the ISOFIX bars should be attached to the vehicle anchors. Check the ISOFIX status windows, the windows will show GREEN when correctly fitted (4.7, picture 2). To release the ISOFIX attachments bars; push the release button/slider (4.7 picture 2). To complete the installation of the base; lift up the front lever (ISOFIX adjusting button, 4.7 picture 1) and push the base towards the vehicle seat back until it is pressed firmly against the vehicle seat backrest.

Installation of the ISOFIX base is now complete. Check once again the status windows are showing GREEN.

**IMPORTANT:** Except the first position (the position where the bars are fully extended), the ISOFIX adjusting button need not be lifted, the seat base can be simply pushed back towards the vehicle seat back.

### 4.8 Fitting the infant carrier (car seat) to the ISOFIX base



• **NOTE: This child seat must be installed rearward facing.**

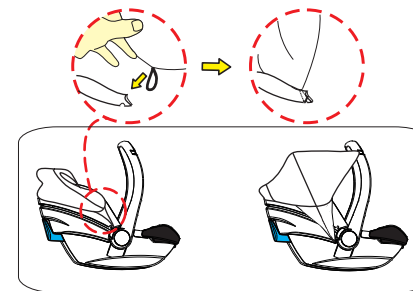
- 1. Installation: Lower the infant carrier onto the ISOFIX base aligning the two bars on the infant carrier base with the corresponding attachments on the base. Push down until you hear the click and the indicator shows GREEN. Pull up on the infant carrier handle to check it is securely fitted.
- 2. To remove: Push the seat locking button until the indicator shows red then lift the infant carrier up and away from the base.

## 4 USAGE

### • 4.9.2 Fitting and removing the sun shade

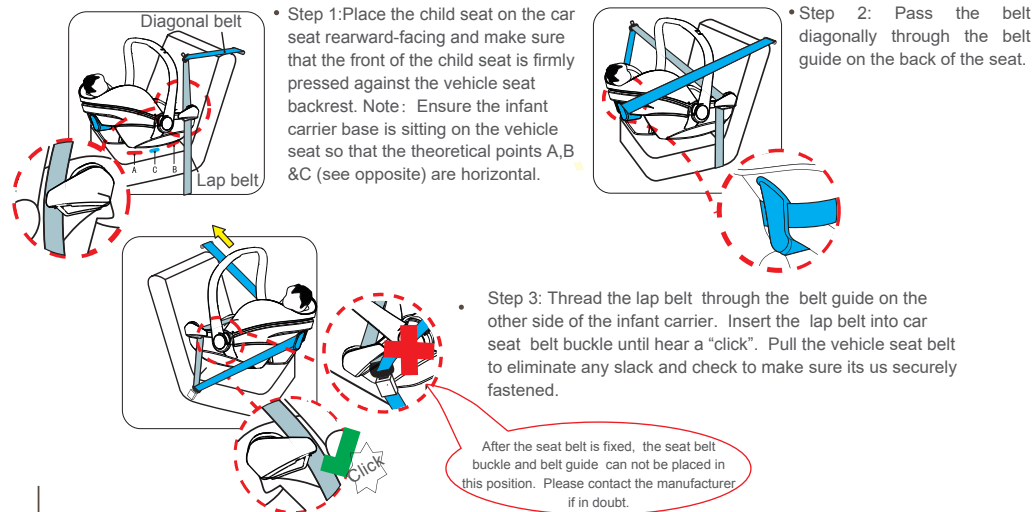
**IMPORTANT:** The sun shade can only be effective if the handle is in the upright position.

Installation: 1. Put the sunroof cover into the gap between the shell and outside cover. 2. Put the rope of sunroof onto the hook of both sides on the outside cover. 3. Hook the top sunroof onto the hooks of the handle.



## 5 INSTALLATION

**WARNING:** This child (seat) restraint must be installed rear facing.  
5.1 This child seat can be installed with adult 3-point belt as an infant carrier module.



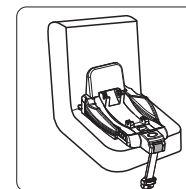
Instructions ▶ Safety Guidelines

## 5 INSTALLATION



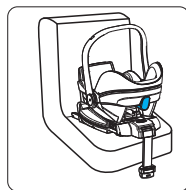
- Step 4: Keep the infant carrier in a stable position and place on the vehicle seat. Hold the infant carrier handle adjuster buttons with both hands; squeeze the red buttons and at the same time push forward the handle against the backrest of the car seat as pictured. Make sure the seat belt is free of twists and follows a smooth route. Remove any slack from the seat belt.

5.2 This child seat can be installed with the Capsule ISOFIX base with support leg.

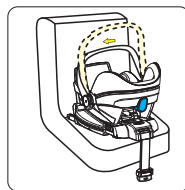


- Step 1: Install the ISOFIX interface to the vehicle seat (see 4.7). Make sure that the ISOFIX status windows show GREEN. Next, push the ISOFIX seat base towards the vehicle seat backrest until it is firmly pressed against the seat backrest. Then adjust the support leg to touch the ground completely, ensure the leg status window shows GREEN (see 4.6).

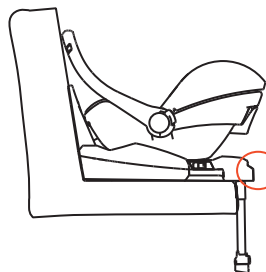
## 5 INSTALLATION



- Step 2: Place the child seat on the ISOFIX base rearward-facing and make sure the basket is connected to the base and the lock is green. (see 4.8)



- Step 3: Keep the basket in a stable position. Hold basket handles adjust buttons with hands. At the same time, press down the basket handle and make it against the backrest of the car seat.



(Install with ISOFIX anchorages with support leg)



Instructions ▶ Safety Guidelines

## 6 MAINTENANCE & CLEANING

### 6.1 Daily maintenance

- In daily use, check periodically the child seat for defects. The child seat should be replaced after an accident.
- Please keep this child seat in dry and ventilated place.
- If the child seat belts become dirty, clean the belts and the plastic components by wiping them with a damp sponge and allow dry naturally.
- If food or drink contaminate the buckle, disassemble the seat belt from the child seat and rinse it gently with warm water. Allow to dry naturally.
- For cleaning the entire child seat fabric cover, please refer to the 6.2 washing instruction.

### 6.2 Washing instruction

- Never use any solvent, chemical detergent or lubricant on any part of your child seat.



Hand wash,  
below 30°C



Do not bleach



Do not tumble dry



Do not iron

### 6.3 To remove and refit the fabric cover

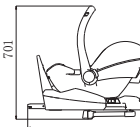
- Open the buckle and take off the shoulder pads and crotch pad and remove head cushion.
- Unthread the harness shoulder straps and the crotch strap.
- Remove the fabric cover of the child seat. To refit the fabric cover, please reverse the removal instructions.

## 7 WEIGHT & DIMENSIONS



439

Instructions



701

▶ Safety Guidelines

- Distance from front to back of the seat (depth): 756mm
- Distance from left to right of the seat (width): 439mm
- Height of the seat: 701mm
- Weight of the seat: 11kg

## 8 CONTENTS

| Name     | Child seat | Instruction manual |
|----------|------------|--------------------|
| Quantity | 1          | 1                  |

Model: Oyster Capsule Infant. NO: LB/BBC- 328i- en- 01A