



BENTLEY

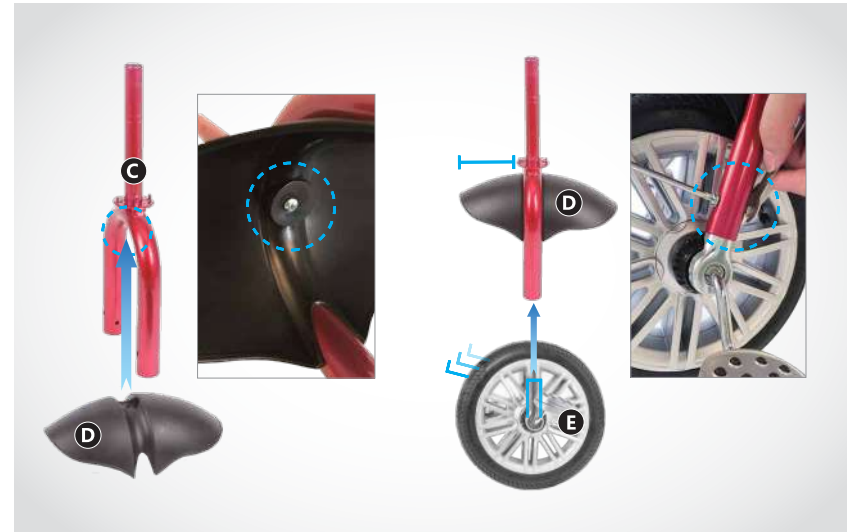
Product Component parts



Assembly Instruction



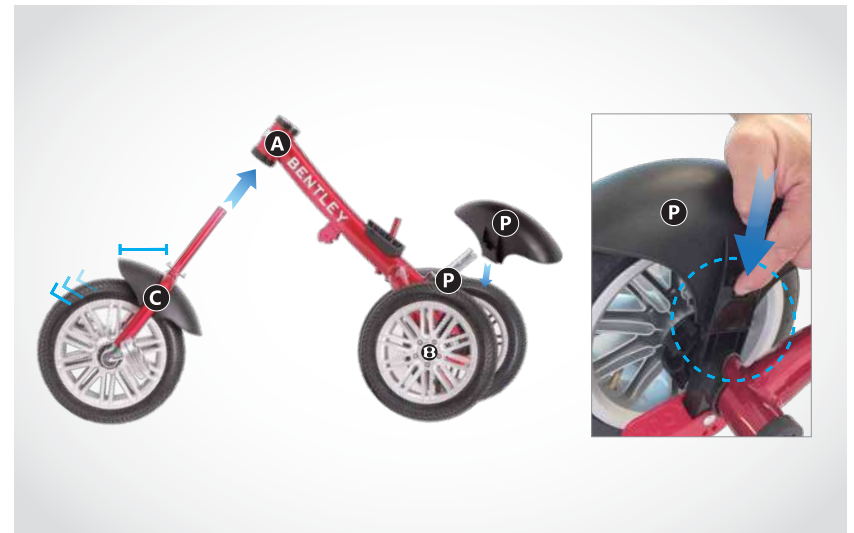
- Insert the brakes (H) into the frame (A).



- First, take off the screw on the front fork (C), then install the fender (D) down to the front fork, second, tighten them up with screw (3N*M). Third, insert the front wheel into the front fork, and tighten them up with screw (5N*M).



- Insert the rear wheels (O) into the frame, then tighten them up with rear axle by tool (5N*M).



- Insert the whole front wheel into the frame (A). Then insert the rear fender (P) into the brake (H).

Assembly Instruction



- Insert the handle bar (B) into the front fork (C), tighten them up with tool (5N*M). Take off the screw and plastic on the middle foot rest (G), then insert the foot rest into the frame, tighten them up with screw and plastic (3N*M).



- First, insert the safety guard (M) into the seat (K).



- First, install the seat (K) onto the frame (A), then tighten them up with screw. Second insert the foot rest (F) into the seat.



- Insert the canopy (I) into the safety guard.

Assembly Instruction



- Insert the basket (N) into the backside of the frame, then tighten them up with screw (3N*M).



- First, insert the pushbar (J) into the backside of the frame, then lock the wrench. Second, install the bag (L) on the pushbar (J).

Main functions

1. ROTATING SEAT AND ADJUSTABLE BACK SUPPORT



- Take off the infant footrest(J) , then Pull down the red button on the back of the rotating seat. Turn the seat 180 degrees, and then there will be a “click” sound that means the seat is in its place.
- The back support can be adjusted in two angles. Press the buttons at the two sides between seat and back support to make it up right or lay down.

2. FRONT FREEWHEEL FUNCTION



- Front freewheel function can wheel stay motionless, while rotating pedals. The pedal clutch switch is located at the central part of the front wheel.

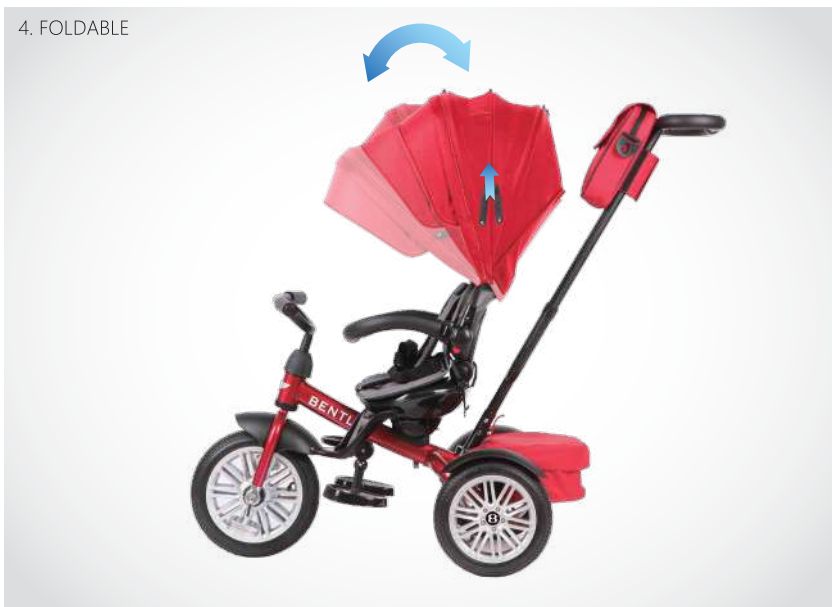
3. REAR BRAKE



- Step on the foot brake to stop the trike. Remove your foot to release the brake. Don't step on brake during regular walking, otherwise damage may occur to the brake.

Main functions

4. FOLDABLE



- The sunshade canopy is foldable, please see picture.

5. WINDOW



- There is a window on the top of the sunshade canopy. You can fix the cover by the fixed rope on top of the sunshade.

6. FOLDABLE



- The middle footrest is foldable.



Product sepcification

Category	Conent	Category	Conent
Available age	12 month and above	Product weight	12.8kg
Max weight	30kg	Product size	830 x 505 x 1055mm
Available height	70~110cm	Product material	IRON ,PP, PVC, ABS,TPR

※ the color parts can be changed.